

# Seniorien mestaruussarja Kauppi



**Oil Pattern Distance:** 40 Feet      **Reverse Brush Drop:** 35 Feet      **Oil Per Board:** 50 uL  
**Forward Oil Total:** 16.7 mL      **Reverse Oil Total:** 7.75 mL      **Volume Oil Total:** 24.45 mL  
**Forward Boards Crossed:** 334 Boards      **Reverse Boards Crossed:** 155 Boards      **Total Boards Crossed:** 489 Boards

	Start	Stop	Loads	Speed	Crossed	Start	End	Feet	T.Oil
1	2L	2R	2	14	74	0.0	1.9	1.9	3700
2	6L	6R	2	14	58	1.9	5.8	3.9	2900
3	8L	8R	3	14	75	5.8	11.7	5.9	3750
4	10L	10R	3	14	63	11.7	17.6	5.9	3150
5	12L	12R	2	18	34	17.6	22.7	5.1	1700
6	13L	13R	2	18	30	22.7	27.8	5.1	1500
7	2L	2R	0	22	0	27.8	40.0	12.2	0

Forward Reverse More

	Start	Stop	Loads	Speed	Crossed	Start	End	Feet	T.Oil
1	2L	2R	0	30	0	40.0	33.0	-7.0	0
2	12L	12R	2	22	34	33.0	26.8	-6.2	1700
3	10L	10R	2	22	42	26.8	20.6	-6.2	2100
4	8L	8R	2	18	50	20.6	15.5	-5.1	2500
5	6L	6R	1	18	29	15.5	13.0	-2.5	1450
6	2L	2R	0	18	0	13.0	0.0	-13.0	0

Forward Reverse More

Conditioner:  
Type In or Select One

TransferType:  
Type In or Select One

Forward



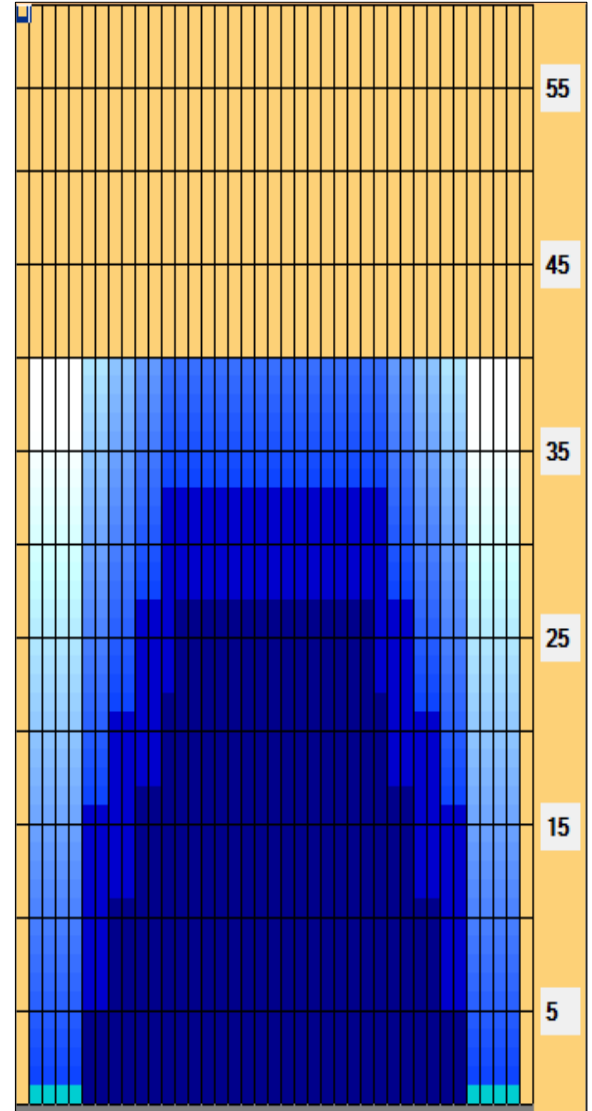
Reverse



Combined



Buff



Item	3L-7L:18L-18R	8L-12L:18L-18R	13L-17L:18L-18R	18L-18R:17R-13R	18L-18R:12R-8R	18L-18R:7R-3R
Description	Outside Track:Middle	Middle Track:Middle	Inside Track:Middle	Middle: Inside Track	Middle:Middle Track	Middle:Outside Track
Track Zone Ratio	6.56	1.52	1	1	1.52	6.56

